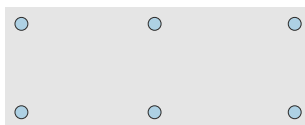
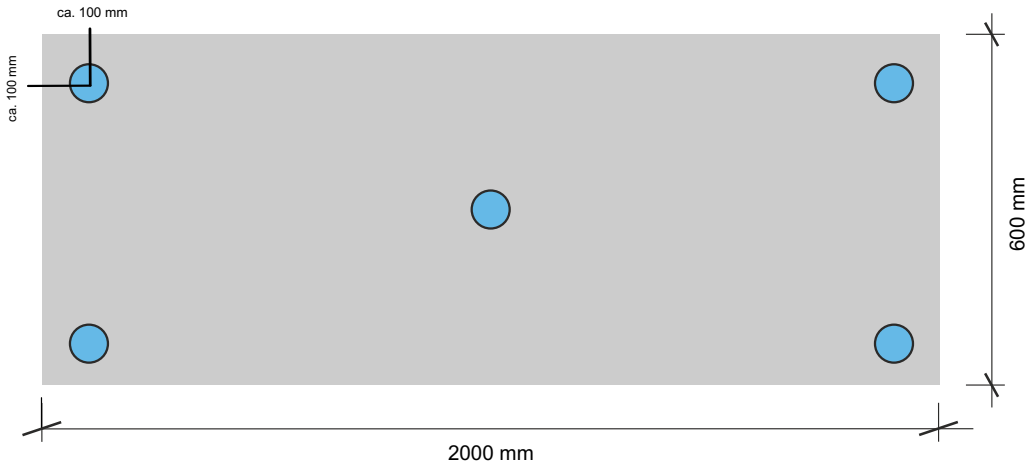


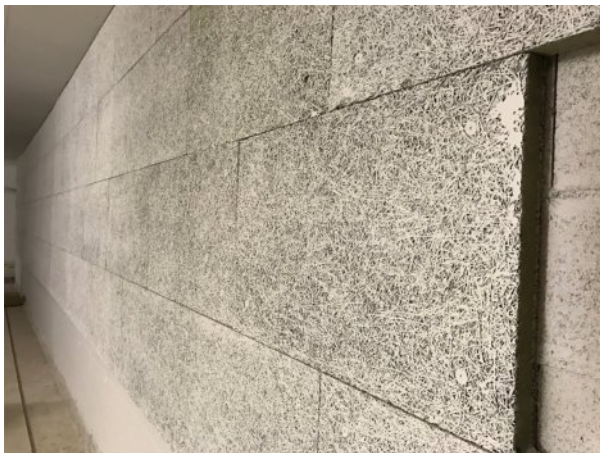
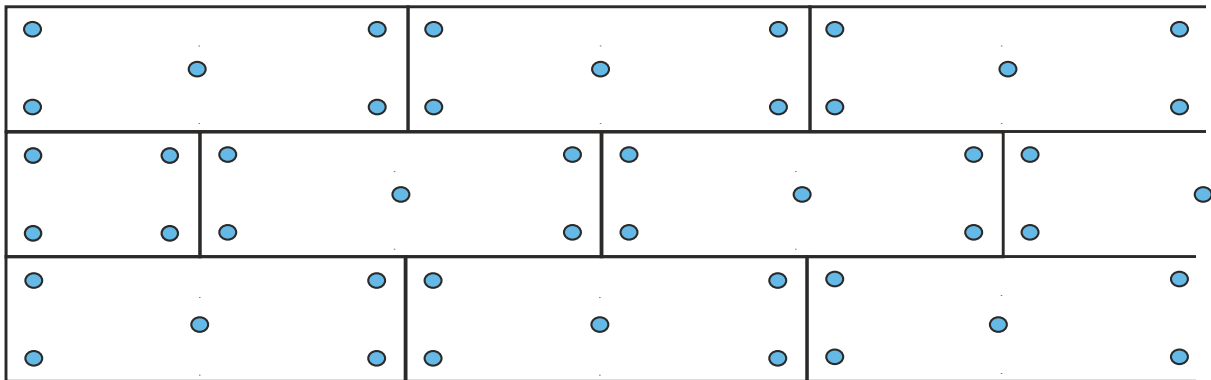
DÜBELSCHEMA | DRVOTERM DTO3

bis 200 mm Dämmstärke

Bedarf: 5 Stk. / Platte*



*wenn baulich
notwendig 6 Stk. / Platte



ENT-VER GmbH

+43 664 44 86 154 | office@ent-ver.com
Schweidlgasse 15/7a | 1020 Wien



Dämmstoffe



Befestigungs-
technik



Absturz-
sicherung



Sanierungs-
system